

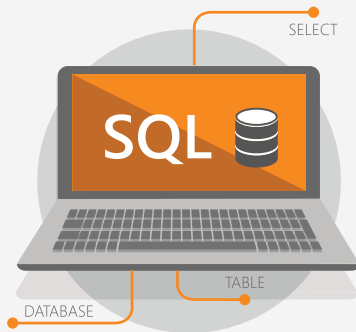
# TECHNICAL SOLUTION ENGINEER

## SQL WIZARD

Lansweeper is a software package used by IT professionals in medium-sized businesses as well as the most well-known multinationals and organizations for the inventory, analysis, and management of their entire IT network.

Want to know more? Take a look [HERE](#).

### A day in the life of



Analyze



Advise



Evaluate



# Hi! My name is [your name here] I'm the new Technical Solution Engineer



[Paste picture here]



[Paste picture here]

## I am someone who



analyzes challenges before tackling them head on.



can think out of the box and offer creative solutions.



is committed, hands-on, eager to learn and share information.



communicates fluently and in a friendly manner.

## I have a



professional bachelor's degree and/or +3 years of experience in technical support.



thorough knowledge of written and spoken English (CEFR B2) to correspond with customers from all over the world.



broad interest in and good working knowledge of IT.



Profound knowledge of SQL for creating SQL reports and scripts.



**Going for gold?**



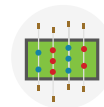
Proficiency in networks and protocols?



Commercial mindset?



Experience with MSSQL, scripting or other programming?

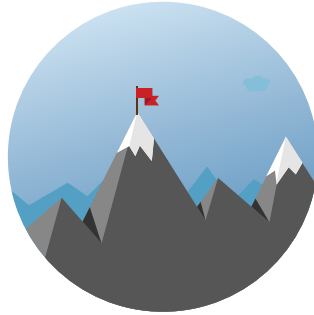


Professional foosball or pool player?

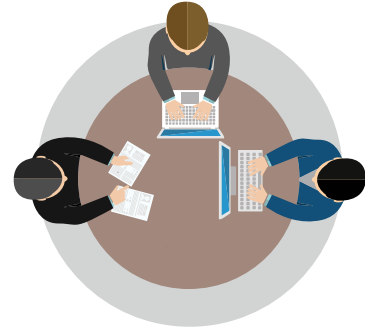
# Our offer you can't refuse



Growing along with a company  
in full expansion



Variation, challenges,  
and responsibility



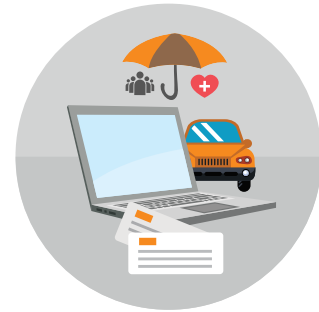
Easygoing teamwork



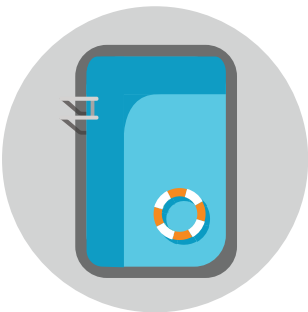
Internal and external training



Competitive wage  
Interesting bonus



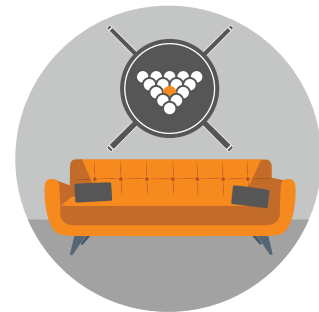
Non-statutory benefits



Indoor pool



Foosball tables  
Arcade



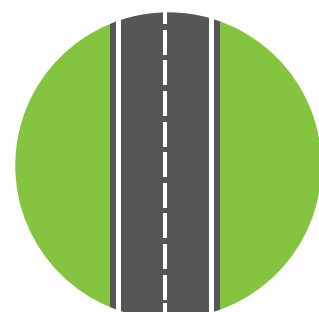
Pool table  
Lounge



Close-knit group



Spontaneous and  
company events



Central and convenient  
office location